

Powerful, compact and precise

Electric gripper HEPP from Festo surprises

The powerful, compact and versatile HEPP electric gripper is suitable for a wide range of workpieces in electrical systems or applications without compressed air. It is optimized for electronics and small parts production, laboratory automation and special machine construction.

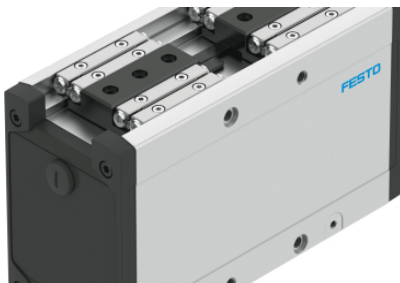
The HEPP's total gripping force of up to 680 N and stroke of up to 56 mm can be adapted to a wide range of workpieces - regardless of size and material properties. Position, stroke, speed, acceleration or gripping force: users simply enter the parameters. With this and the dynamic electric motor, designers can easily adapt the Festo HEPP electric gripper to individual requirements.

Its travel behavior and workpiece handling can also be ideally defined in complex manufacturing processes in the electronics and small parts industry, laboratory automation and special machine construction. If the power supply is interrupted, the proven integrated holding brake ensures a safe stop.

Integrated controller and simple control

The integrated controllers make HEPP very compact. And communication via interfaces such as PROFINET®, Ethernet/IP® or EtherCat® enables simple commissioning, parameterization and monitoring in real time. Users optimize their processes with the Festo automation system CPX-E via EtherCat® and obtain smart system solutions with compatible products.

Press Images



HEPP

Electric gripper HEPP from Festo: optimized for electronics and small parts production, laboratory automation and special machine construction.

07. November 2024

Responsible
according to press
law:
Christian Österle



Download/View press
release and press
images.